



SPECIFICATIONS	
TYPE	Adjustable 12° armrest
MATERIAL	Aluminium
AVAILABLE ALSO IN	Nylon
HEIGHT ADJUSTMENT	100 mm [3.94 in]
WIDTH ADJUSTMENT	Fixed
	42 mm [1.65 in] (According to the fixing kit)
PAD TO PAD DISTANCE	From 364 mm [14.33 in] to 510 mm [20.08 in]
RELATED PAD	Complete Donati pad family
PAD ADJUSTMENT	— 30 mm [1.2 in] side
	— 45 mm [1.8 in] backwards / forwards
	— 360° rotation
	— 40 mm [1.6 in] backwards / forwards
SEAT CONNECTION	Type-B armrest interface
ITEMS PER BOX	40
BOXES PER PALLET (MOQ)	4 boxes (160 items)
PALLET SIZE (LxWxH)	80 x 120 x 210 cm [31.5 x 47.2 x 82.7 in]

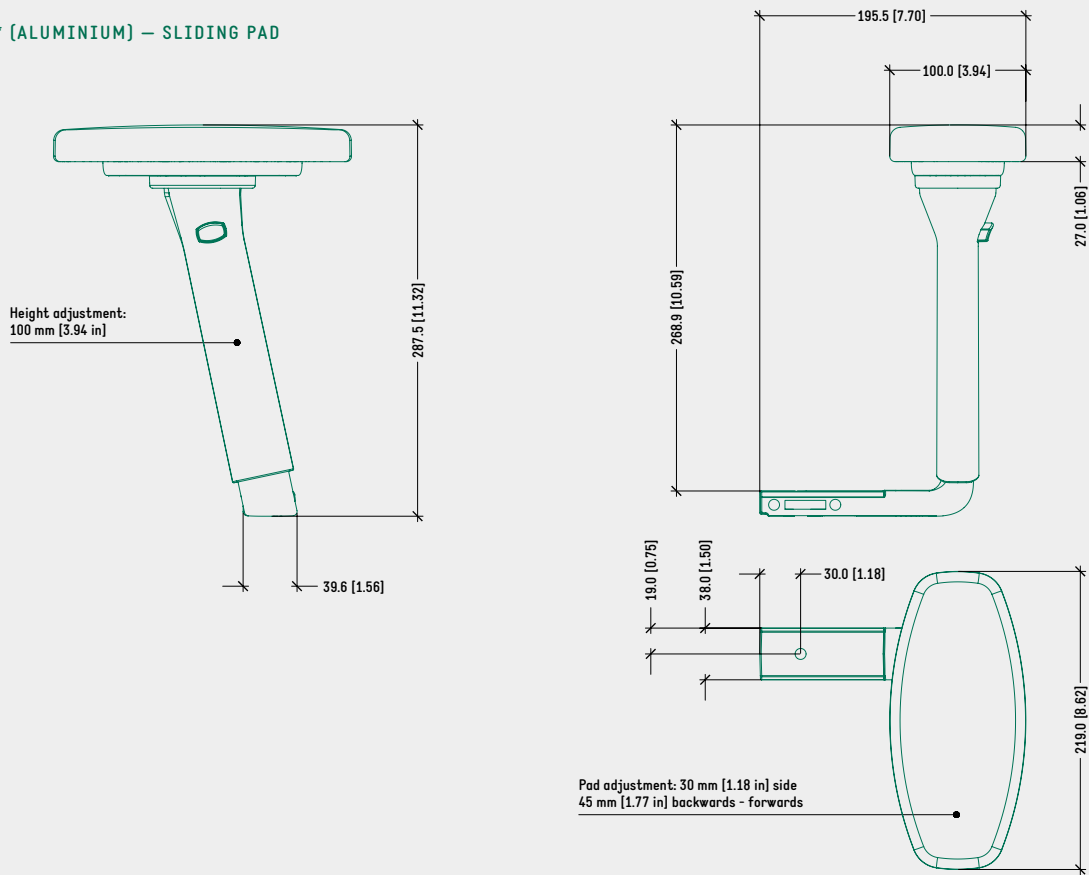
## PRODUCT CODES

## BeO 4D – 12° (ALUMINIUM)

SLIDING PAD (MIDI & COX ONLY)	4502521
ROTATING PAD WITH POSITION LOCK	4500521

TECHNICAL DRAWING

BeO 4D – 12° (ALUMINIUM) – SLIDING PAD



SURFACE COLOURS / FINISHES



RELATED PRODUCTS



TYPE-B ARMREST FIXING KIT CODES

FOR TRASLA 2 – TRASLA 2 CABLE SEAT

WIDTH ADJUSTABLE - WITH ARMBAR [EN1335]	4500167
WIDTH ADJUSTABLE - WITH ARMBAR [BIFMA]	4500117
FIXED - W/O ARMBAR [EN1335]	4501700

FOR TRASLA 3 SEAT

WIDTH ADJ. - W/O ARMBAR [EN1335 & BIFMA]	4501120
--	---------

FOR KITE SEAT

FIXED - W/O ARMBAR [EN1335 & BIFMA]	4501703
-------------------------------------	---------

FOR SLIM – CONKA – FLAT – CUSTOMERS' SEAT

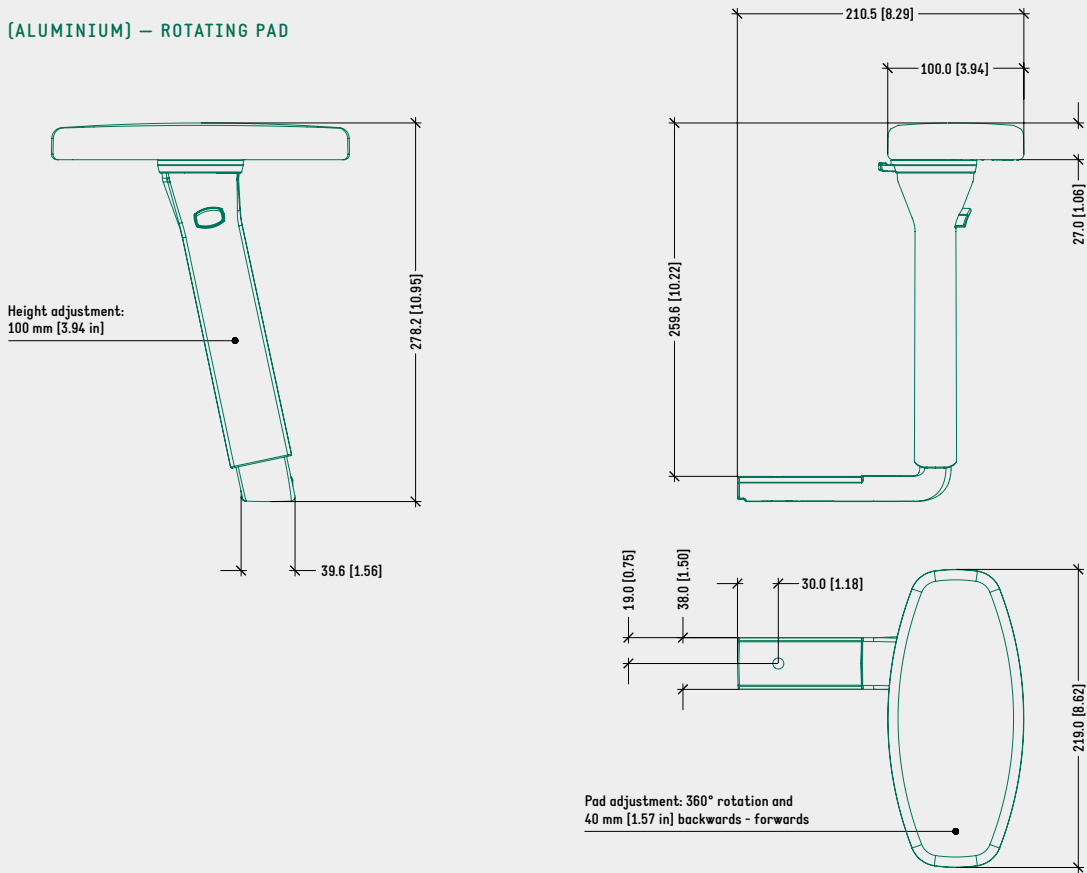
WIDTH ADJUSTABLE - WITH ARMBAR	4500118
WIDTH ADJUSTABLE - W/O ARMBAR	4500165

FOR DASH SEAT

WIDTH ADJUSTABLE - WITH ARMBAR [EN1335]	4500167
WIDTH ADJUSTABLE - WITH ARMBAR	4501169

TECHNICAL DRAWING

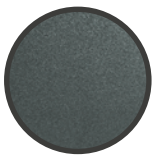
BeO 4D – 12° (ALUMINIUM) – ROTATING PAD



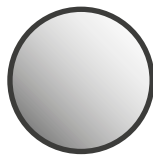
SURFACE COLOURS / FINISHES



BLACK NYLON  
ARMRESTS



RAL 7610 NYLON  
BUTTONS



POLISHED  
ALUMINIUM  
ARMRESTS BRACKET

RELATED PRODUCTS



TYPE-B  
ARMREST INTERFACE  
SEATS ONLY

TYPE-B ARMREST FIXING KIT CODES

FOR TRASLA 2 – TRASLA 2 CABLE SEAT

WIDTH ADJUSTABLE - WITH ARMBAR [EN1335]	4500167
WIDTH ADJUSTABLE - WITH ARMBAR [BIFMA]	4500117
FIXED - W/O ARMBAR [EN1335]	4501700

FOR TRASLA 3 SEAT

WIDTH ADJ. - W/O ARMBAR [EN1335 & BIFMA]	4501120
--	---------

FOR KITE SEAT

FIXED - W/O ARMBAR [EN1335 & BIFMA]	4501703
-------------------------------------	---------

FOR SLIM – CONKA – FLAT – CUSTOMERS' SEAT

WIDTH ADJUSTABLE - WITH ARMBAR	4500118
WIDTH ADJUSTABLE - W/O ARMBAR	4500165

FOR DASH SEAT

WIDTH ADJUSTABLE - WITH ARMBAR [EN1335]	4500167
WIDTH ADJUSTABLE - WITH ARMBAR	4501169



FOX	
D x W x H (mm)	225 x 99 x 27
D x W x H [in]	8.85 x 3.89 x 1.06
PU	4700555



MIDI	
D x W x H (mm)	219 x 100 x 27
D x W x H [in]	8.62 x 3.94 x 1.06
PU	9000538
PP	9000537



STANDARD	
D x W x H (mm)	236 x 112 x 27
D x W x H [in]	9.29 x 4.41 x 1.06
PU	9000515



NPR	
D x W x H (mm)	216 x 112 x 27
D x W x H [in]	8.50 x 4.41 x 1.06
PU	9000554



COX	
D x W x H (mm)	235 x 100 x 27
D x W x H [in]	9.25 x 3.94 x 1.06
PU	9000551



SQUARE	
D x W x H (mm)	236 x 112 x 27
D x W x H [in]	9.29 x 4.41 x 1.06
PU	9000547