

ALUMINIUM  
VERSION AVAILABLE

#### SPECIFICATIONS

TYPE	5 star base
MATERIAL	Nylon + GF
AVAILABLE ALSO IN	Aluminium
EXTERNAL DIAMETER	707,5 mm [27.85 in]
GLIDES / CASTERS DIAMETER	680,0 mm [26.77 in]
MORSE CONE DIAMETER	50,0 mm [1.97 in]
CONE TAPER HEIGHT	92,5 mm [3.64 in]
SURFACE COLOURS / FINISHES	Photoengraved (Novatex 7381)
WEIGHT	1,65 Kg [3,64 lb]
ITEMS PER BOX	78
BOXES PER PALLET (MOQ)	2 boxes (156 items)
PALLET SIZE (LxWxH)	160 x 115 x 220 cm [63.0 x 45.3 x 86.6 in]

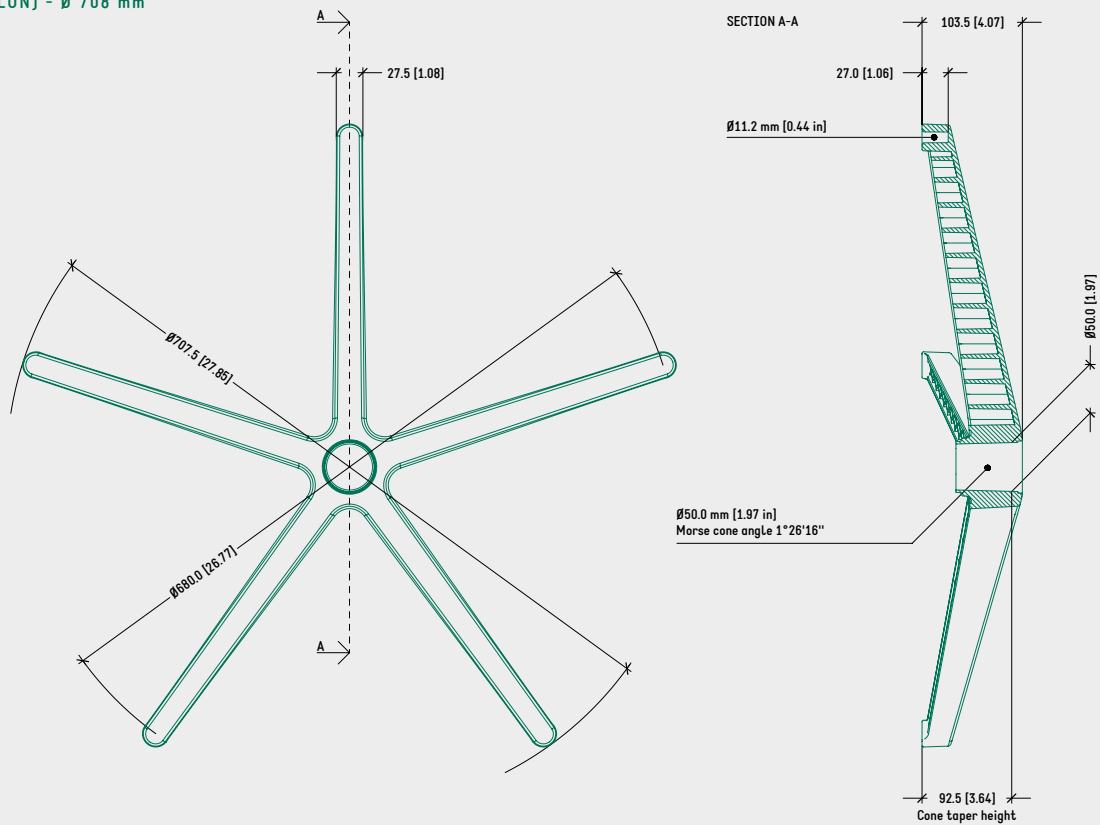
#### PRODUCT CODES

DB1.13 (NYLON) - Ø 708 mm

5012045

## TECHNICAL DRAWING

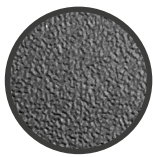
## DB1.13 (NYLON) - Ø 708 mm



## NOTES

- Cone taper height: measured from ground (w/o casters or glides) to Morse cone taper Ø 50 mm [1.97 in].
- Minimum recommended distance between gas cylinder and ground for nylon bases 30~35 mm [1.18 ~ 1.38 in].

## SURFACE COLOURS / FINISHES



PHOTOENGRAVED  
(NOVATEX 7381)

## RELATED PRODUCTS



DB1.13 - Ø 708 mm  
(ALUMINIUM)  
CODE: 5010300



ALUMINIUM  
VERSION AVAILABLE

#### SPECIFICATIONS

TYPE	5 star base
MATERIAL	Nylon + GF
AVAILABLE ALSO IN	Aluminium
EXTERNAL DIAMETER	688,0 mm [27.09 in]
GLIDES / CASTERS DIAMETER	660,0 mm [25.99 in]
MORSE CONE DIAMETER	50,0 mm [1.97 in]
CONE TAPER HEIGHT	115,3 mm [4.54 in]
SURFACE COLOURS / FINISHES	Photoengraved (Novatex 340)
WEIGHT	1,58 Kg [3,48 lb]
ITEMS PER BOX	78
BOXES PER PALLET (MOQ)	2 boxes (156 items)
PALLET SIZE (LxWxH)	160 x 115 x 220 cm [63.0 x 45.3 x 86.6 in]

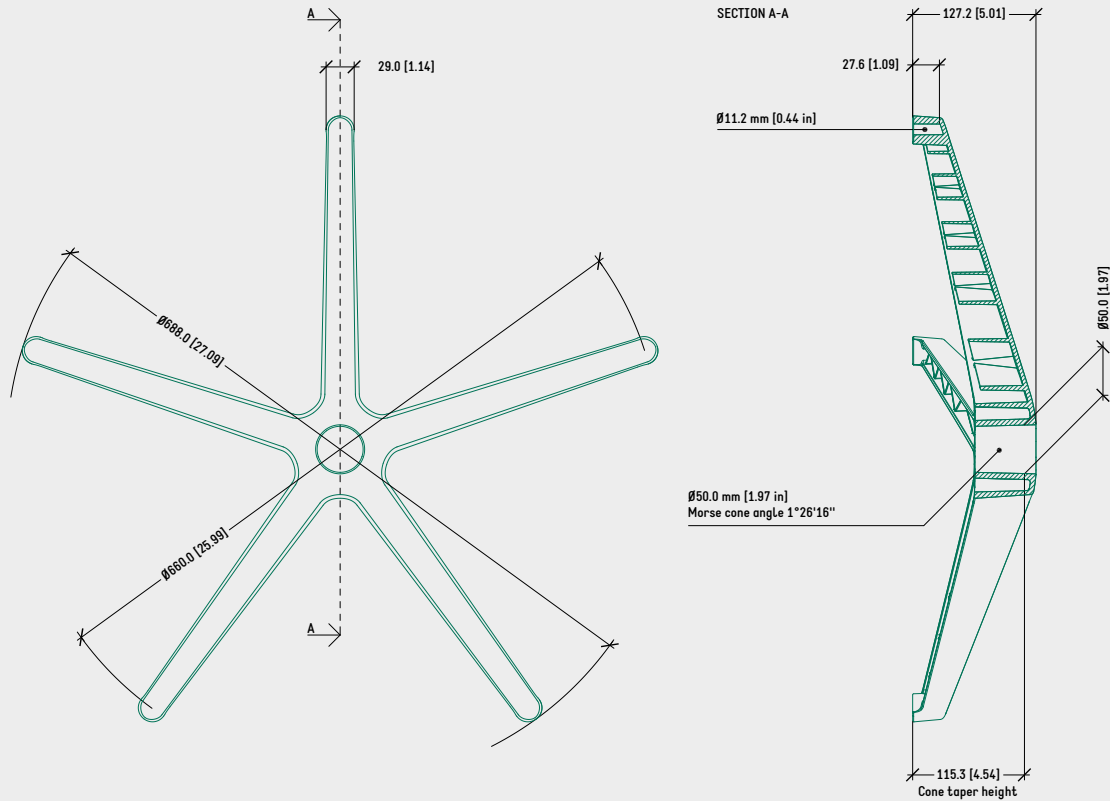
#### PRODUCT CODES

DB1.13 (NYLON) - Ø 688 mm

5012510

## TECHNICAL DRAWING

## DB1.13 (NYLON) - Ø 688 mm



## NOTES

- Cone taper height: measured from ground (w/o casters or glides) to Morse cone taper Ø 50 mm [1.97 in].
- Minimum recommended distance between gas cylinder and ground for nylon bases 30~35 mm [1.18 ~ 1.38 in].

## SURFACE COLOURS / FINISHES



PHOTOENGRAVED  
(NOVATEX 340)

## RELATED PRODUCTS



DB1.13 - Ø 688 mm  
(ALUMINIUM)  
CODE: 5010370