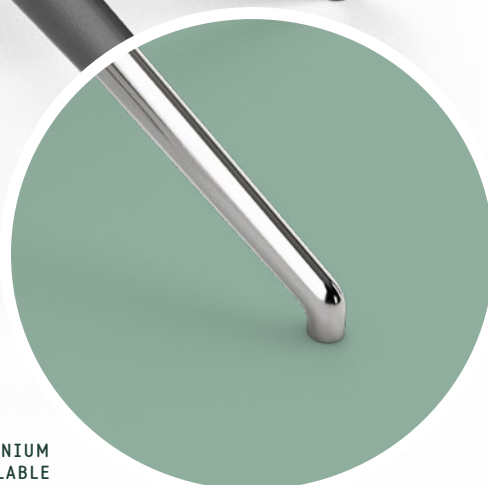
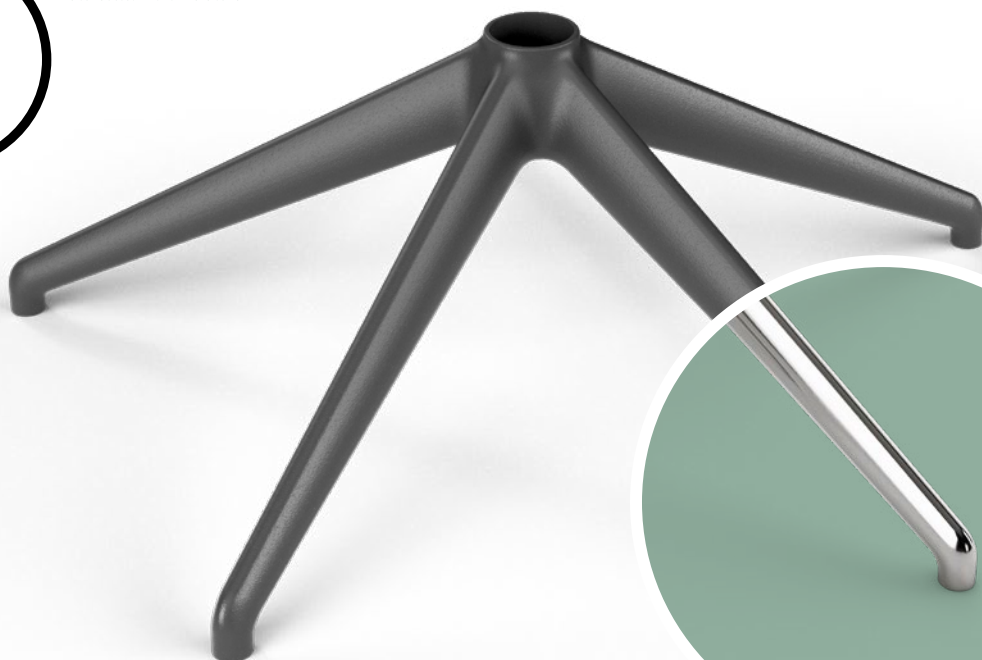




OPTIONAL: HARD FLOOR
OR CARPET FLOOR GLIDE



ALUMINIUM
VERSION AVAILABLE

SPECIFICATIONS

TYPE	5 star base
MATERIAL	Nylon + GF
AVAILABLE ALSO IN	Aluminium
EXTERNAL DIAMETER	700,5 mm [27.58 in]
GLIDES / CASTERS DIAMETER	680,0 mm [26.77 in]
MORSE CONE DIAMETER	50,0 mm [1.97 in]
CONE TAPER HEIGHT	220,8 mm [8.69 in]
SURFACE COLOURS / FINISHES	Photoengraved (Novatex 340)
WEIGHT	1,82 Kg [4,01 lb]
ITEMS PER BOX	60
BOXES PER PALLET (MOQ)	2 boxes (120 items)
PALLET SIZE (LxWxH)	160 x 115 x 220 cm [63.0 x 45.3 x 86.6 in]

PRODUCT CODES

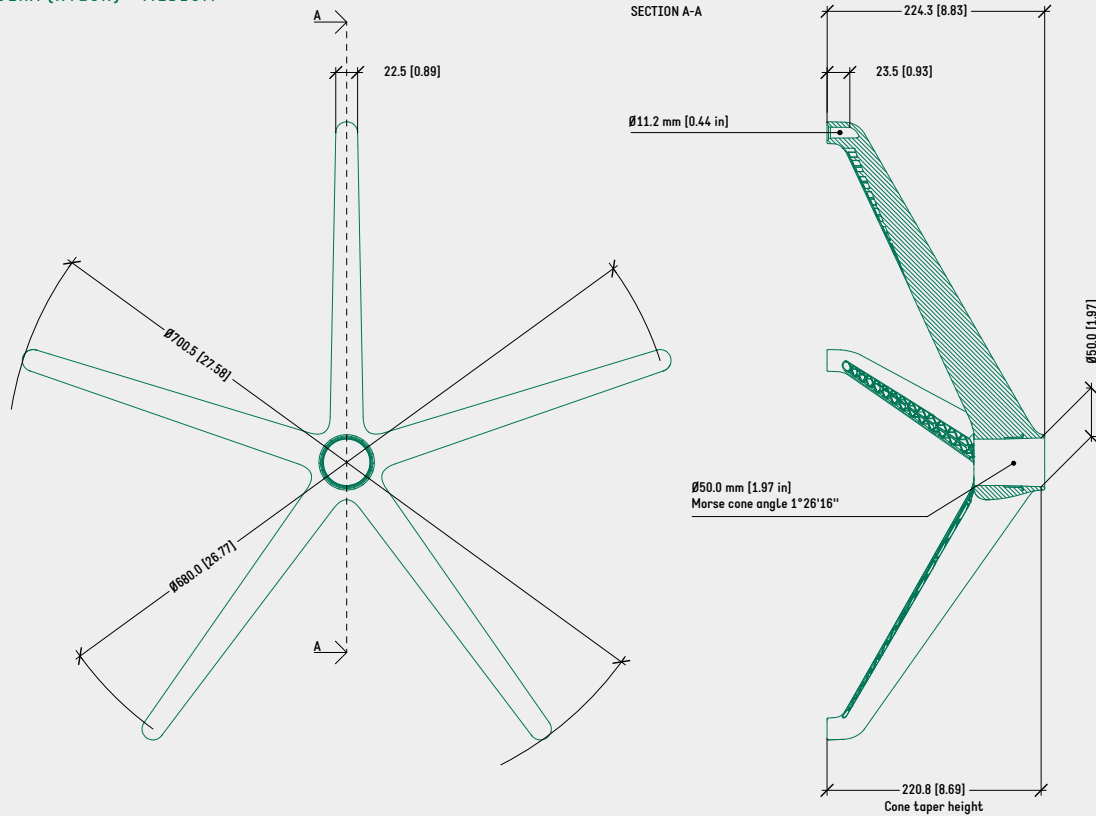
.....
SUPERLEGGERA (NYLON) - MEDIUM - 5 STAR

BLACK 5012090

WHITE RAL 9016 5012091

TECHNICAL DRAWING

SUPERLEGGERA (NYLON) - MEDIUM



NOTES

- Cone taper height: measured from ground (w/o casters or glides) to Morse cone taper \varnothing 50 mm [1.97 in].
- Minimum recommended distance between gas cylinder and ground for nylon bases 30-35 mm [1.18 - 1.38 in].

SURFACE COLOURS / FINISHES



PHOTOENGRAVED
(NOVATEX 340)
BLACK



PHOTOENGRAVED
(NOVATEX 340)
WHITE RAL 9016

RELATED PRODUCTS



SUPERLEGGERA
4 AND 5 STAR
BASE COLLECTION



SUPERLEGGERO
SUPPORT COLLECTION

RELATED PRODUCTS



\varnothing 24 x 5 mm
SMALL GLIDE
HARD FLOOR: 4510100



\varnothing 24 x 5 mm
SMALL GLIDE
CARPET FLOOR: 4510101