



## SPECIFICATIONS

TYPE	4 star base
MATERIAL	Aluminium
EXTERNAL DIAMETER	715,0 mm [28.15 in]
GLIDES / CASTERS DIAMETER	680,0 mm [26.77 in]
MORSE CONE DIAMETER	50,0 mm [1.97 in]
CONE TAPER HEIGHT	65,5 mm [2.58 in]
SURFACE COLOURS / FINISHES	— Polished — Black painted
DESIGN	Alejandro Valdés

## PRODUCT CODES

.....

**TREVI**

POLISHED / BLACK PAINTED

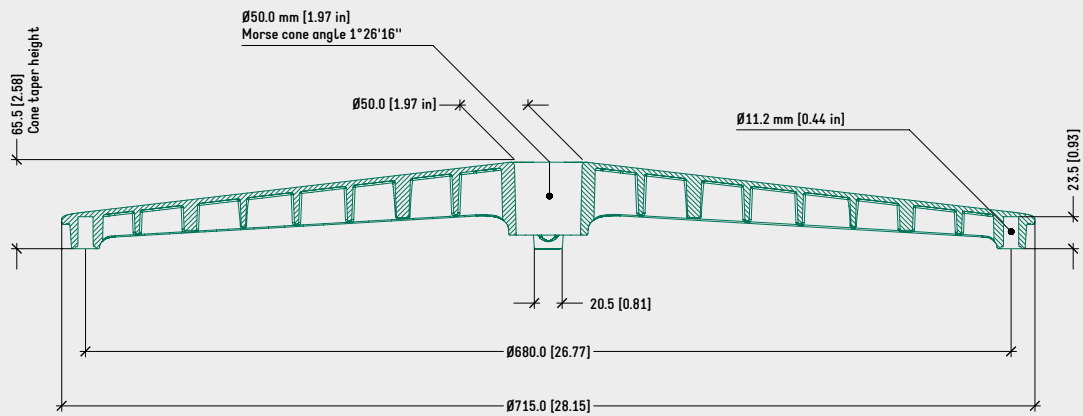
5010850

BLACK PAINTED

5010855

## TECHNICAL DRAWING

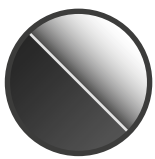
## TREVI - 4 STAR



## NOTES

- Cone taper height: measured from ground (w/o casters or glides) to Morse cone taper Ø 50 mm [1.97 in].
- Minimum recommended distance between gas cylinder and ground for aluminium bases: 15~20 mm [0.59 ~ 0.79 in].

## SURFACE COLOURS / FINISHES



POLISHED TOP  
BLACK PAINTED BOTTOM



BLACK PAINTED

## RELATED PRODUCTS



TREVI  
4 AND 5 STAR  
BASE COLLECTION

## RELATED PRODUCTS



Ø24 x 5 mm  
SMALL GLIDE  
HARD FLOOR: 4510100



Ø24 x 5 mm  
SMALL GLIDE  
CARPET FLOOR: 4510101