

SPECIFICATIONS	
TYPE	Multi tilt mechanism
TILT ANGLE	17,5° backrest
BACKREST TILT LOCK	5 positions, by lever
HEIGHT ADJUSTMENT	By lever
SEAT ANGLE ADJUSTMENT	From 2,5° backward to 6,5° forward
COMFORT	— Side tension adjustment crank <u>or</u> — Side tension adjustment knob
SEAT CONNECTION	Donati universal seat plate
BACK BAR CONNECTION	Donati standard (width 90,0 mm [3.54 in])
MORSE CONE DIAMETER	28,0 mm [1.10 in]
MECHANISM SURFACE FINISH	Black painted
LEVER FINISH	Black
ITEMS PER BOX	32
BOXES PER PALLET (MOQ)	4 boxes (128 items)
PALLET SIZE (LxWxH)	80 x 120 x 210 cm [31.5 x 47.2 x 82.7 in]

PRODUCT CODES

EPRON PLUS

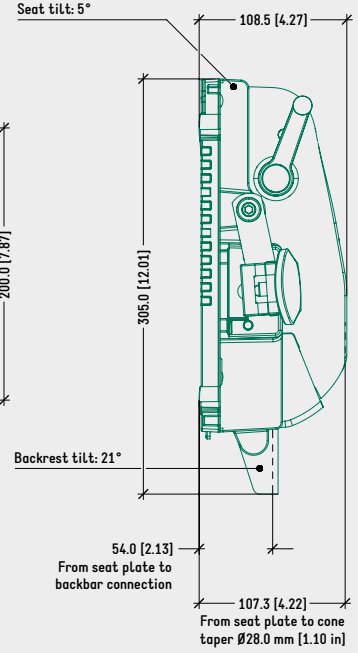
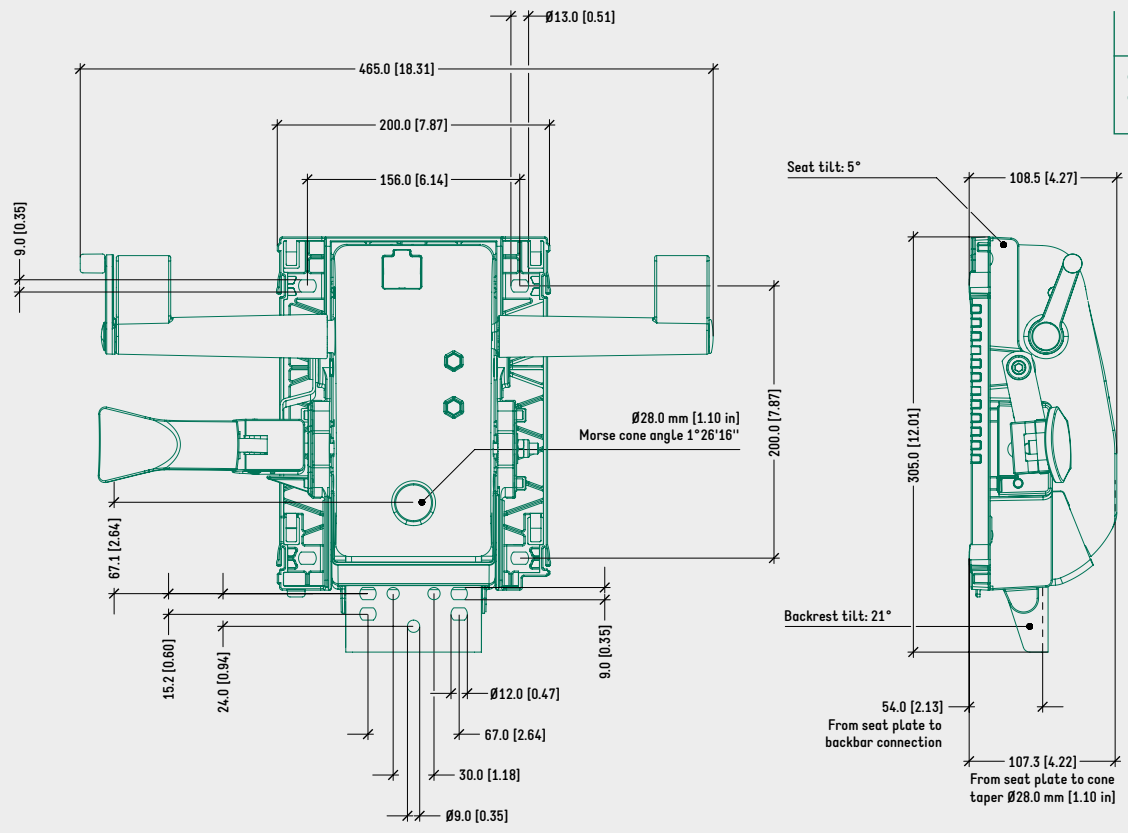
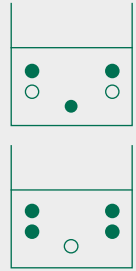
ASYNCHRON

1061761

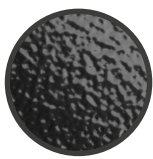
TECHNICAL DRAWING

EPRON PLUS ASYNCHRON

RECOMMENDED FIXING HOLES FOR BACK SUPPORT CONNECTION (WIDTH 90,0 mm [3,54 in])



SURFACE COLOURS / FINISHES



BLACK PAINTED ALUMINIUM HOUSING



BLACK PLASTIC LEVERS, SEAT PLATE, COVER

RELATED PRODUCTS



DONATI QUICK CONNECTION SLIDING SEAT FAMILY



DONATI BOLT-ON SLIDING OR FIXED SEAT FAMILY



BOLT-ON SEATS 153x200 mm [6.0x7.9 in] CONNECTION



DONATI QUICK CONNECTION ADAPTER PLATE CODE: 4515220



DONATI QUICK CONNECTION SLIDING ADAPTER MODULA 1 CODE: 4515270