

SPECIFICATIONS	
TYPE	Quick connection seat w/o upholstery plate
SEAT DEPTH ADJUSTMENT	– 50,0 mm [1.97 in] (with 2 clips) – 70,0 mm [2.76 in] (with 1 clip) – 100,0 mm [3.94 in] (without clips)
CERTIFICATIONS	– EN1335 – BIFMA
UPHOLSTERY FIXING	By draw string
ARMREST CONNECTION	– Type-N armrest interface – Type-V3 armrest interface
MECHANISM CONNECTION	– Donati quick connection sliding seat rails – Donati universal seat plate
ITEMS PER BOX	36
BOXES PER PALLET (MOQ)	4 boxes (144 items)
PALLET SIZE (LxWxH)	80 x 120 x 210 cm [31.5 x 47.2 x 82.7 in]

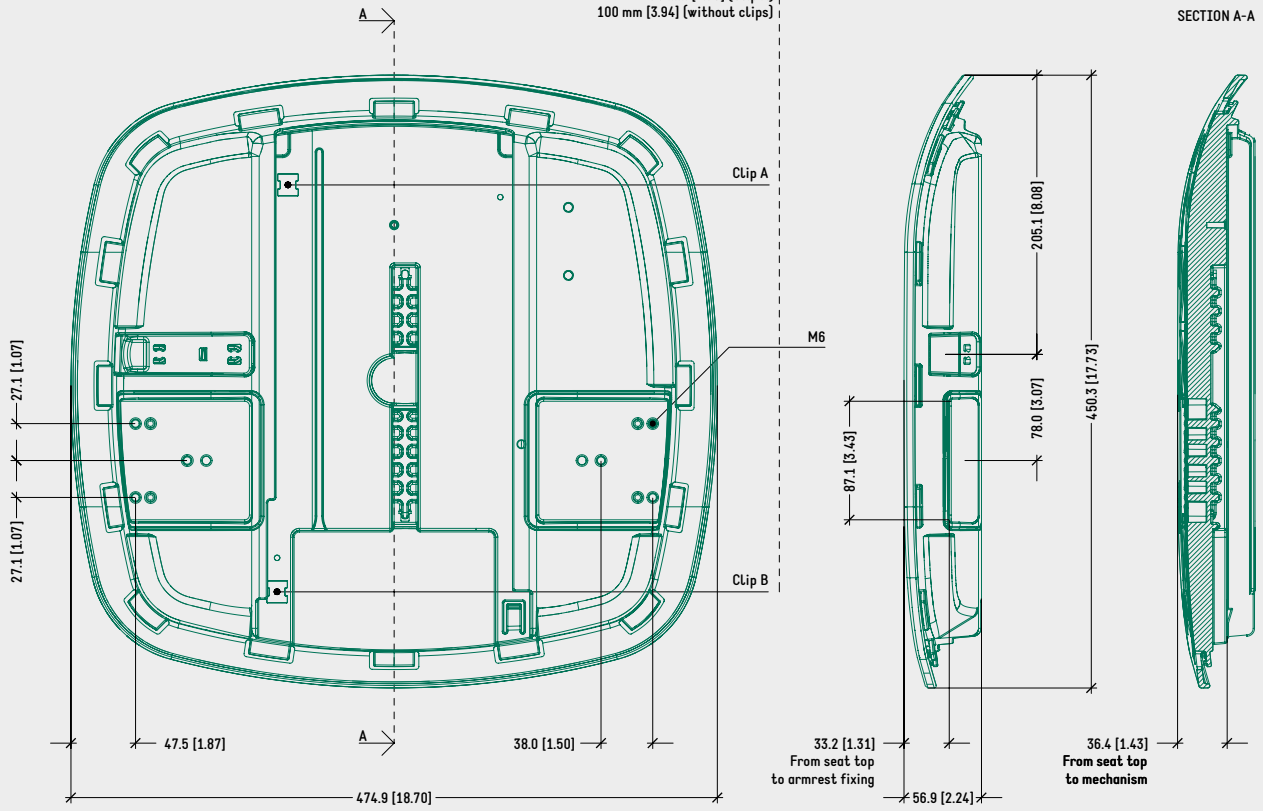
PRODUCT CODES

.....	
<u>TRASLA 4</u>	
FIXED ARMREST (TYPE-V3 INTERFACE)	4515210
WIDTH ADJ. ARMREST (TYPE-N INTERFACE)	4515217
PU FOAM	4580072
INSTRUCTION HOLDER	4501028

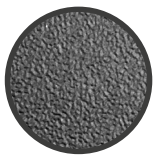
TECHNICAL DRAWING

TRASLA 3 - FIXED ARMREST (TYPE-V3 INTERFACE)

SEAT DEPTH ADJUSTMENT |  
50 mm [1.97] (Clip A + Clip B) |  
70 mm [2.76] (Clip A) |  
100 mm [3.94] (without clips)



SURFACE COLOURS / FINISHES

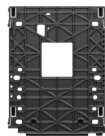


PHOTOENGRAVED  
(NOVATEX 7381)  
SEAT

RELATED PRODUCTS



DONATI SEAT  
RAILS CONNECTION  
MECHANISMS



DONATI UNIVERSAL  
SEAT PLATE CONNECTION  
MECHANISMS



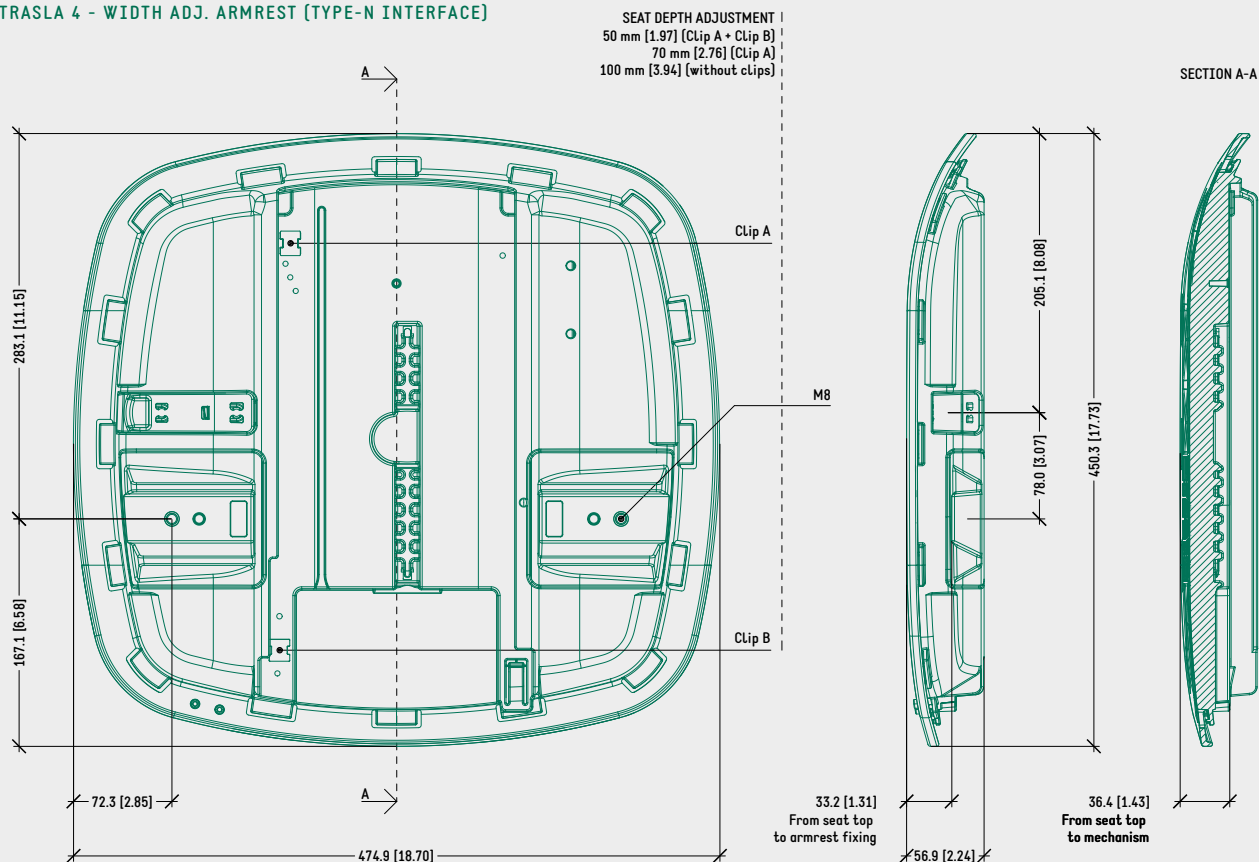
INSTRUCTION HOLDER  
CODE: 4501028



TYPE-V3 ARMREST  
INTERFACE CONNECTION  
ONLY

TECHNICAL DRAWING

TRASLA 4 - WIDTH ADJ. ARMREST (TYPE-N INTERFACE)



SURFACE COLOURS / FINISHES



PHOTOENGRAVED  
(NOVATEX 7381)  
SEAT

TYPE-N ARMREST FIXING KIT CODES

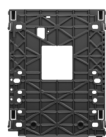
FOR NYLON ARMREST

WIDTH ADJUSTABLE - W/O ARMBAR (BIFMA) 4501111

RELATED PRODUCTS



DONATI SEAT  
RAILS CONNECTION  
MECHANISMS



DONATI UNIVERSAL  
SEAT PLATE CONNECTION  
MECHANISMS



INSTRUCTION HOLDER  
CODE: 4501028



TYPE-N ARMREST  
INTERFACE CONNECTION  
ONLY