

SPECIFICATIONS	
TYPE	Fixed support
FACTORY SEAT SETUP	2,5° backwards
[OPT.] HEIGHT ADJUSTMENT	By lever
SEAT CONNECTION	Bolt-on plate 70 x 90 mm [2.76 x 3.54 in]
MORSE CONE DIAMETER	28,0 mm [1.10 in]
MECHANISM SURFACE FINISH	— Polished — Black painted
GAS LEVER FINISH	— Chrome (Zamak) — Black painted (Zamak) — Black (Nylon)
FIXED WITH HEIGHT ADJUSTMENT	
ITEMS PER BOX	25
BOXES PER PALLET (MOQ)	15 boxes (375 items)
FIXED W/O HEIGHT ADJUSTMENT	
ITEMS PER BOX	30
BOXES PER PALLET (MOQ)	15 boxes (450 items)
PALLET SIZE (LxWxH)	80 x 120 x 170 cm [31.5 x 47.2 x 66.9 in]

## PRODUCT CODES

.....  
ARMONICO FIXED WITH HEIGHT ADJUSTMENT

POLISHED 1020454

BLACK PAINTED 1020453

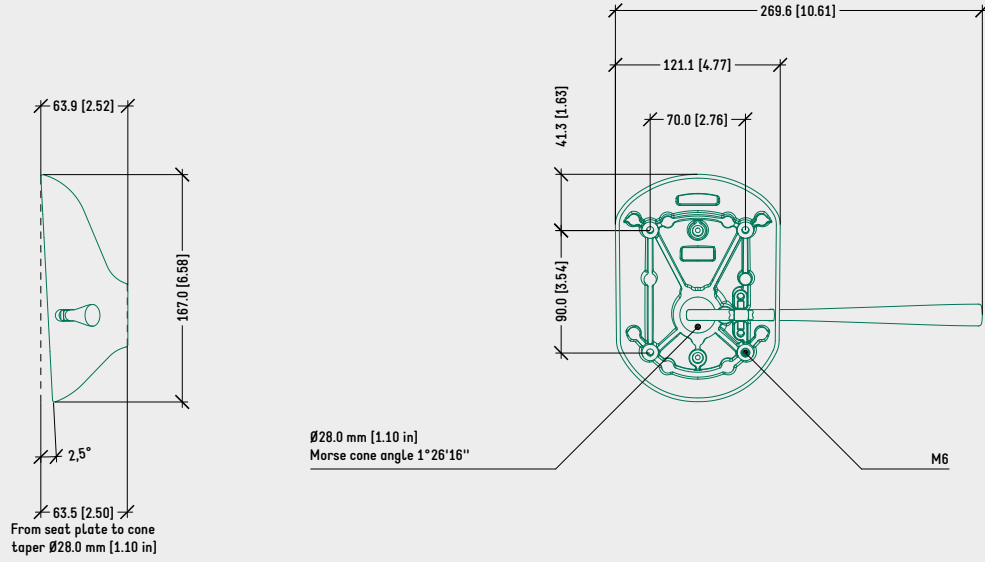
ARMONICO FIXED W/O HEIGHT ADJUSTMENT

POLISHED 1020461

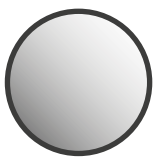
BLACK PAINTED 1020460

TECHNICAL DRAWING

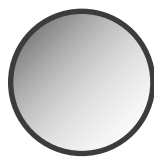
ARMONICO FIXED WITH HEIGHT ADJUSTMENT



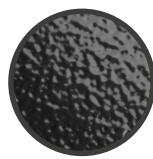
SURFACE COLOURS / FINISHES



POLISHED ALUMINIUM HOUSING



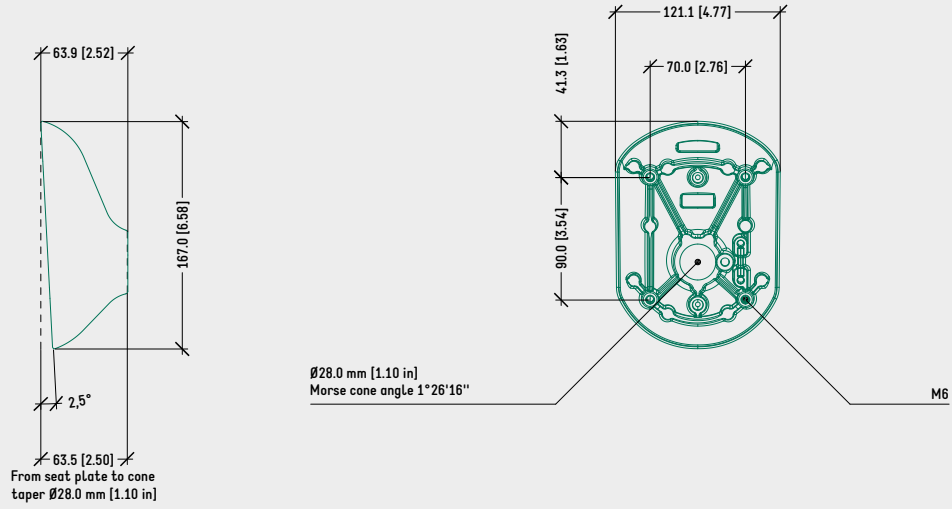
CHROMED ZAMAK LEVER



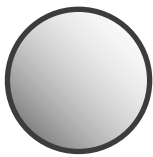
BLACK PAINTED ALUMINIUM HOUSING, LEVER

TECHNICAL DRAWING

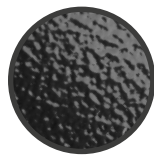
ARMONICO FIXED W/O HEIGHT ADJUSTMENT



SURFACE COLOURS / FINISHES



POLISHED ALUMINIUM HOUSING



BLACK PAINTED ALUMINIUM HOUSING